



4-TIME  
AWARD WINNING  
PAVILION VENUE



**UCLA** | MILDRED E. MATHIAS  
BOTANICAL GARDEN

## INDOOR, OUTDOOR, & HYBRID EVENT VENUES

Host your next event in a **lush oasis** in the Westwood neighborhood of Los Angeles. From conferences to team-building exercises, the UCLA Botanical Garden is a **memorable venue** for any special occasion.

[botgard.ucla.edu/venue-reservations](https://botgard.ucla.edu/venue-reservations)



# LA KRETZ GARDEN PAVILION

Our one and only **hybrid venue space** for all your event needs.



## RETRACTABLE GLASS WALLS + DIVIDER

Turn your event into a hybrid event with our state-of-the-art pavilion space! Increase airflow and allow your guests to feel comfortable and impressed at the same time.



## AUDIO / VISUAL SYSTEM

Showcase presentations or slideshows during your event with our new and improved A/V system. Internal & external speakers included.



## FURNITURE INCLUDED

Each room has a total of 40 white chairs, 9 large tables, and 8 metallic chairs.

A bright, clean, and *flexible* venue space. With built-in AV systems & WiFi, this venue gives your guests easy access to our living museum and a breathtaking view of the north side of the Garden. **Herbert Plaza** can be added as additional outdoor space. (+50 capacity)

**Perfect for:** Panel discussions, meetings, retreats, corporate meetings, seminars, etc.

## CAPACITY

Standing: ~50 per room

Classroom layout: ~30 per room

Theater layout: ~48 per room

Maximum: 175 guests (With Herbert Plaza)





# PARK'S PATIO

*A naturally shaded, luscious, & clean venue space.*



Just feet away from La Kretz Garden Pavilion, Park's Patio offers a **refreshing** and **naturally-shaded** outdoor space with gorgeous teak furniture.

**Perfect for:** Business retreats, private meetings, lunches, celebration of life events, informal meetings, etc.

---

## CAPACITY

Standing: ~50 guests  
Seated: ~ 30 guests



### SHADED SPACE

Enjoy lunch under the sun and natural shade. Each large table also offers large umbrellas.



### ADA ACCESSIBLE

Just a few steps from the main entrance of the Garden, Park's Patio is conveniently located and makes it easy for just about anyone to have access to the venue space.



### EASY RESTROOM ACCESS

This space offers easy access to male, female, and gender neutral restrooms.





# JEWELL TERRACE

Our only venue  
located *inside* the Garden!



## FURNITURE INCLUDED

Three round teak tables with benches are included.



## VENUE VIEWS

The best views the Garden has to offer. You will be able to see The Stream full of wildlife, the pollination garden, & more.



## SHADED SEATING AREA

3 large umbrellas will keep you and your guests feeling refreshed all day

Located in the heart of the Garden, Jewell Terrace is a **serene & intimate space** for small gatherings. Only available during regular Garden hours.

**Perfect for:** Celebration of life events, welcome events, staff luncheons, and more.

---

## CAPACITY

Standing: ~ 35 - 40 guests  
Seated: ~ 27 guests



# THE NEST AMPHITHEATER

An outdoor amphitheater  
with a **stunning** view.



## LARGE WHITEBOARD ACCESS

Need a visual aide? With the help of our retractable white board, you can help your audience visualize your presentation or use it for decoration purposes.



## PRIVATE LOCATION

Tucked quietly in a corner, The Nest Amphitheater highlights one of the most stunning views the Garden has to offer.



## SEATING INCLUDED

With a total of 3 wooden rows, allow your party to see the wonders of the Garden

An outdoor amphitheater in the Garden with 3 rows of seating. Located in a silent corner, this gorgeous space is surrounded by vibrant plants.

**Perfect for:** Team building activities, class activities, weddings/ elopements, & more.

## CAPACITY

Standing: ~50 guests

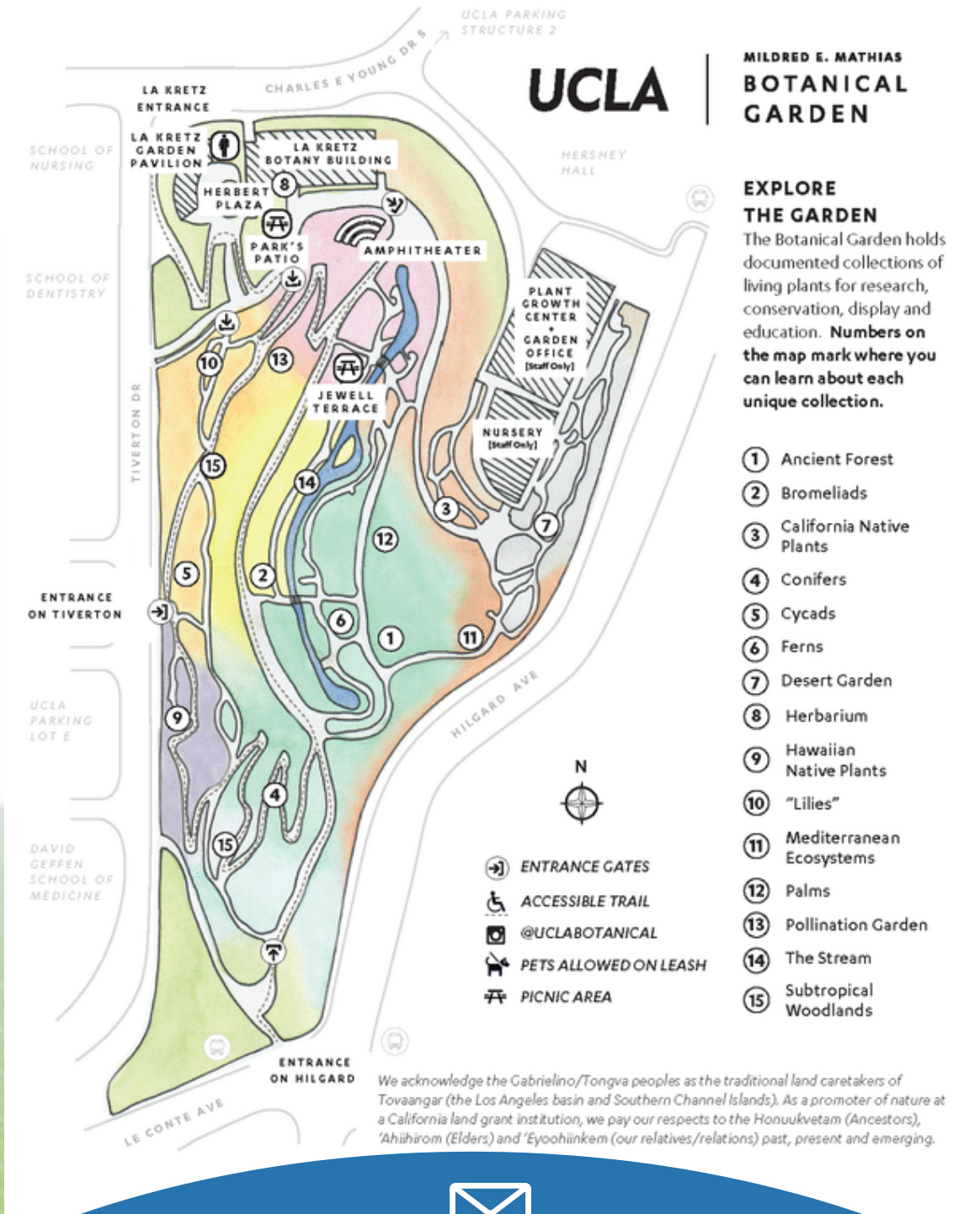
Seating: ~ 40-50 guests

Maximum: 100 guests with accomodation





# GARDEN MAP



## CONTACT

[Click here to get a free quote.](#)  
Please fill out the form at the bottom of the page.

We will reach out within 12-36 hours.

Garden Reservations  
707 Tiverton Dr. Los Angeles, CA 90095  
[gardenreservations@lifesci.ucla.edu](mailto:gardenreservations@lifesci.ucla.edu)

Venue showings by appointment only.

# FREQUENTLY ASKED QUESTIONS

## Will there be staff during my event?

> Most definitely! At least one staff member will be available during your event to help with any logistical concerns/ venue troubleshooting.

## How many restrooms does the pavilion have?

> La Kretz Garden Pavilion offers a total of 3 bathrooms (1 female, 1 male, and 1 gender neutral). These are the only publicly accessible restrooms at the Garden.

## How does the Garden keep my event private?

> Our team will place "Private Event" signs on all entrances to ensure the public doesn't interfere. We also have belt barriers to help with crowd control.

## Is there a good location nearby for equipment/food/decoration drop-off?

> Yes! Located on Tiverton Dr. next to La Kretz Garden Pavilion you will find a ramp in which you and your vendors can use to drop off anything you need on the day of.

## Do you allow DJs? How can I play my own music?

DJs are allowed at the Garden. Should you want to play your own music, the pavilion has its own built-in internal and external speakers to set the mood! For outdoor venues, you're able to use our Bluetooth portable speaker at no charge.

## What's the best place for parking?

> UCLA Parking Structure 2 is the closest parking structure to the Garden as it is about 4 minutes away from the pavilion (707 Tiverton Dr.). You are able to buy your guests parking vouchers by contacting UCLA Special Events office at [sehelpdesk@ucla.edu](mailto:sehelpdesk@ucla.edu). (Payment required at machines, \$3 per hour, \$14 all day).

## Do you have an inventory list of the furniture available?

> Please check out [this page](#) to find out more about furniture inventory and venue features.

## What is the payment schedule?

> Payment is due 3 days before your event. You can find more details on the agreement.

## What is your cancellation/refund policy?

> We are sorry to hear you need to cancel your event. In the event the wedding host cancels, you are entitled to the remaining percentage of the deposit. Deposit is 25% of the total price and is non-refundable

*Host an unforgettable event with us.*

To see more venue features, pictures, and to receive a free quote, head to our [Venue Reservation page](#).