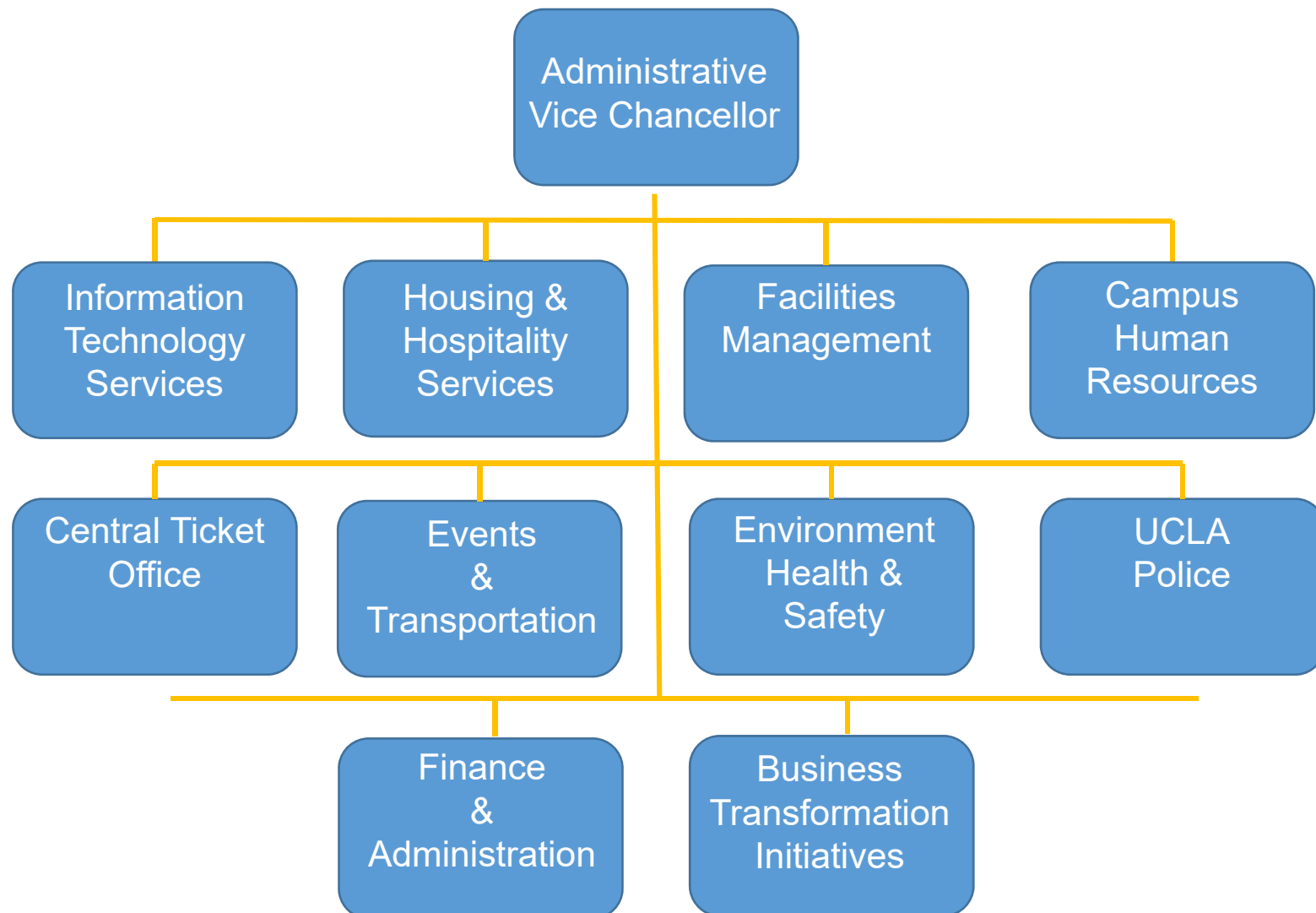




# Holmby Westwood Property Owners Association

October 10, 2017

# Administration

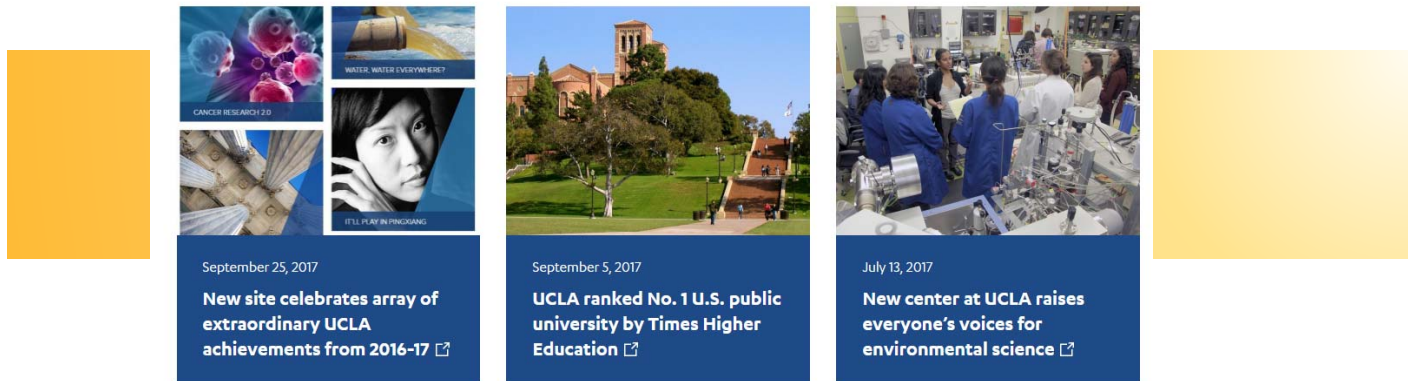


# UCLA 2017 Rankings

- #1 public university (Times Higher Education world university rankings)
- #1 U.S. public university (U.S. News and World Report)
- #1 hospital in Los Angeles (U.S. News and World Report)
- #1 university in startup companies launched (Milken Institute)
- #1 elite college in enrolling highest percentage of low- and middle-income students (New York Times)
- #2 public university in the world (Shanghai Jiao Tong University)
- #2 best value college (Forbes)

# Chancellor's Priorities

- Academic Excellence



The Academic Excellence section features three news cards. The first card, dated September 25, 2017, is titled "New site celebrates array of extraordinary UCLA achievements from 2016-17" and includes images of cancer research, water, and a woman. The second card, dated September 5, 2017, is titled "UCLA ranked No. 1 U.S. public university by Times Higher Education" and features a photo of the UCLA campus. The third card, dated July 13, 2017, is titled "New center at UCLA raises everyone's voices for environmental science" and shows a laboratory setting.

September 25, 2017  
**New site celebrates array of extraordinary UCLA achievements from 2016-17** [↗](#)

September 5, 2017  
**UCLA ranked No. 1 U.S. public university by Times Higher Education** [↗](#)

July 13, 2017  
**New center at UCLA raises everyone's voices for environmental science** [↗](#)

- Civic Engagement



The Civic Engagement section features three news cards. The first card, dated August 31, 2017, is titled "UCLA institute leads the way for 70 years to improve workers' lives" and shows a group of people. The second card, dated August 25, 2017, is titled "UCLA law students travel to Texas to help families seeking asylum" and shows a group of students. The third card, dated August 15, 2017, is titled "Mann UCLA Community School successfully opens its ninth grade" and shows a classroom.

August 31, 2017  
**UCLA institute leads the way for 70 years to improve workers' lives** [↗](#)

August 25, 2017  
**UCLA law students travel to Texas to help families seeking asylum** [↗](#)

August 15, 2017  
**Mann UCLA Community School successfully opens its ninth grade** [↗](#)

# Chancellor's Priorities

- Diversity



August 9, 2017

**Women are making progress toward gender balance in the social sciences** [↗](#)



August 9, 2017

**Summer program at UCLA helps build more diverse pipeline for health care field** [↗](#)



July 17, 2017

**The evolution of LGBTQ studies at UCLA** [↗](#)

- Financial Security



August 30, 2017

**UCLA Law gets \$1 million gift for trial advocacy program** [↗](#)



June 8, 2017

**Sale of artists' works raises \$700,000-plus for UCLA Department of Art** [↗](#)

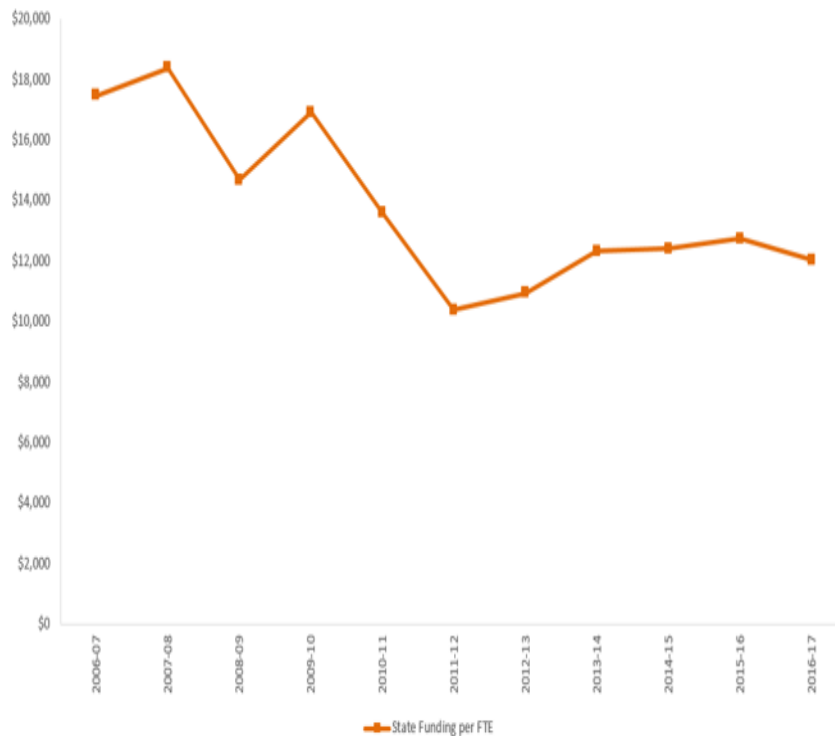


April 20, 2017

**UCLA among the nation's best for commercializing campus research** [↗](#)

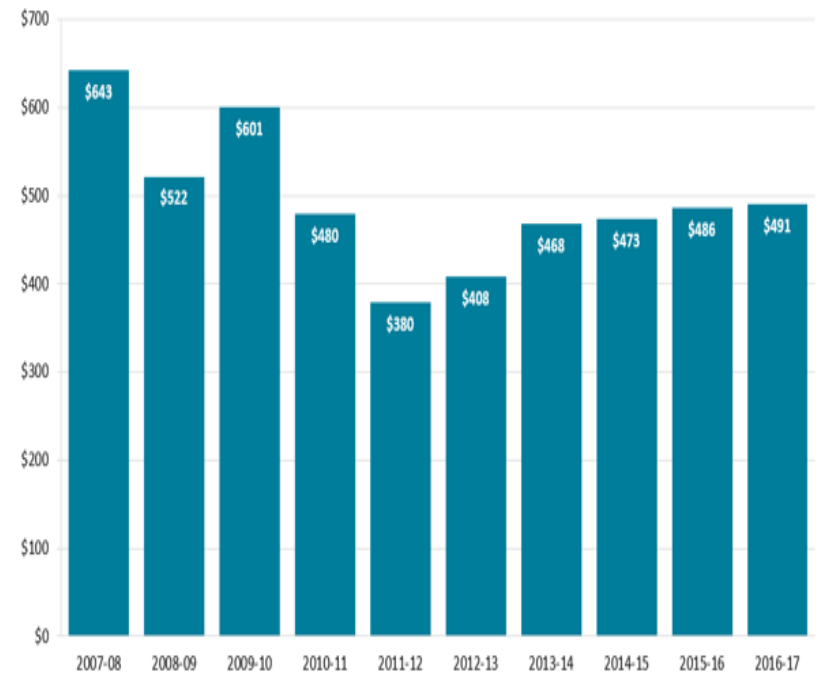
# Changes in State Funding to UCLA

Resulting Change in State Funding per FTE



General campus FTE based on Instruction-Based Student FTE (Capped).  
Health Science unweighted FTE based on Three-Quarter Average Unduplicated Major Headcount.  
Includes Interns and Residents.

In Millions of Dollars



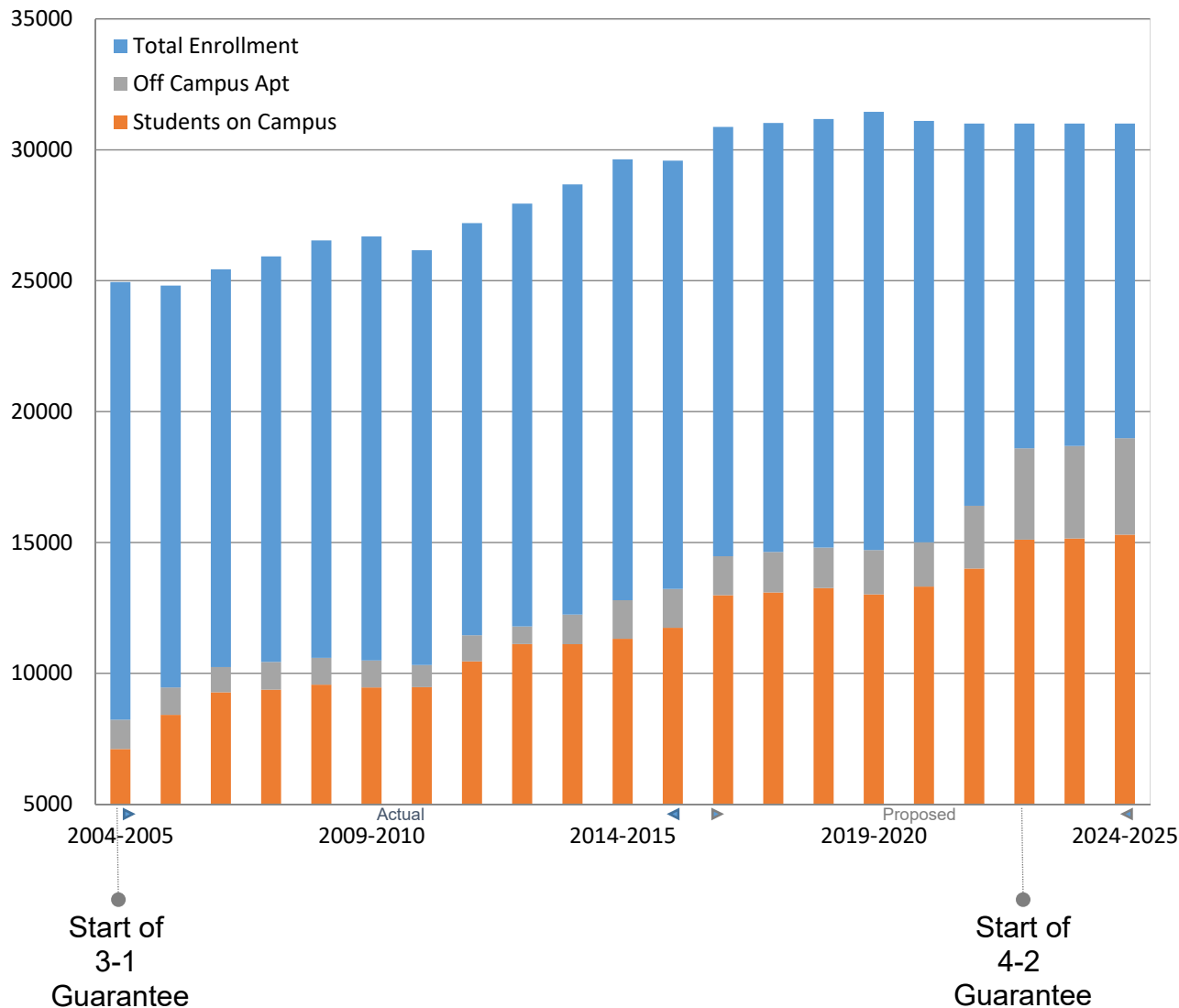
**Significant Milestones**

- **2007-08:** UCLA's state funds were \$643 million. This was also the year of the financial crisis.
- **2011-12:** State funds fell to \$380 million, a reduction of \$263 million, or 41%, below the 2007-08 level.
- **2016-17:** State funds have increased \$111 million since 2011-12. State funds remain \$152 million, or 24%, below 2007-08 levels, in nominal terms, not accounting for inflation or increased student enrollment.

# UCLA Housing Update



# Undergraduates in University Housing



- 14,300 undergrad students (46%). Up from 33% in 04/05
- 97% of 1<sup>st</sup> year students
- 3-1 guarantee offered since 04/05
- 3,400 graduate students
- 2.8% vacancy rate in the Westwood private market with highest LA rents



# Proposed New Housing

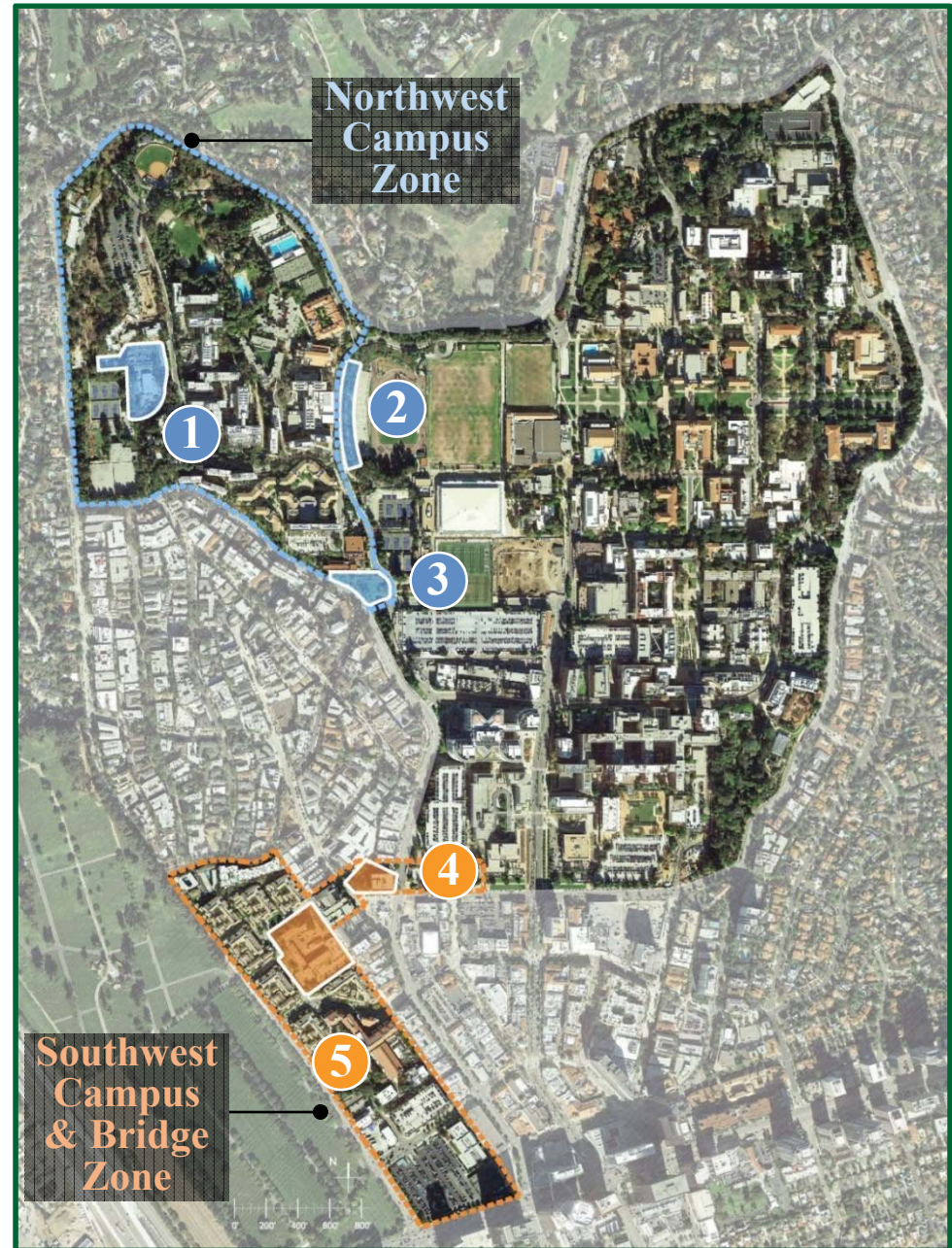
- Entitle ~6,900 beds on 5 sites
- Build at least 4,500 beds on 3 sites by 2022

## Residence Halls:

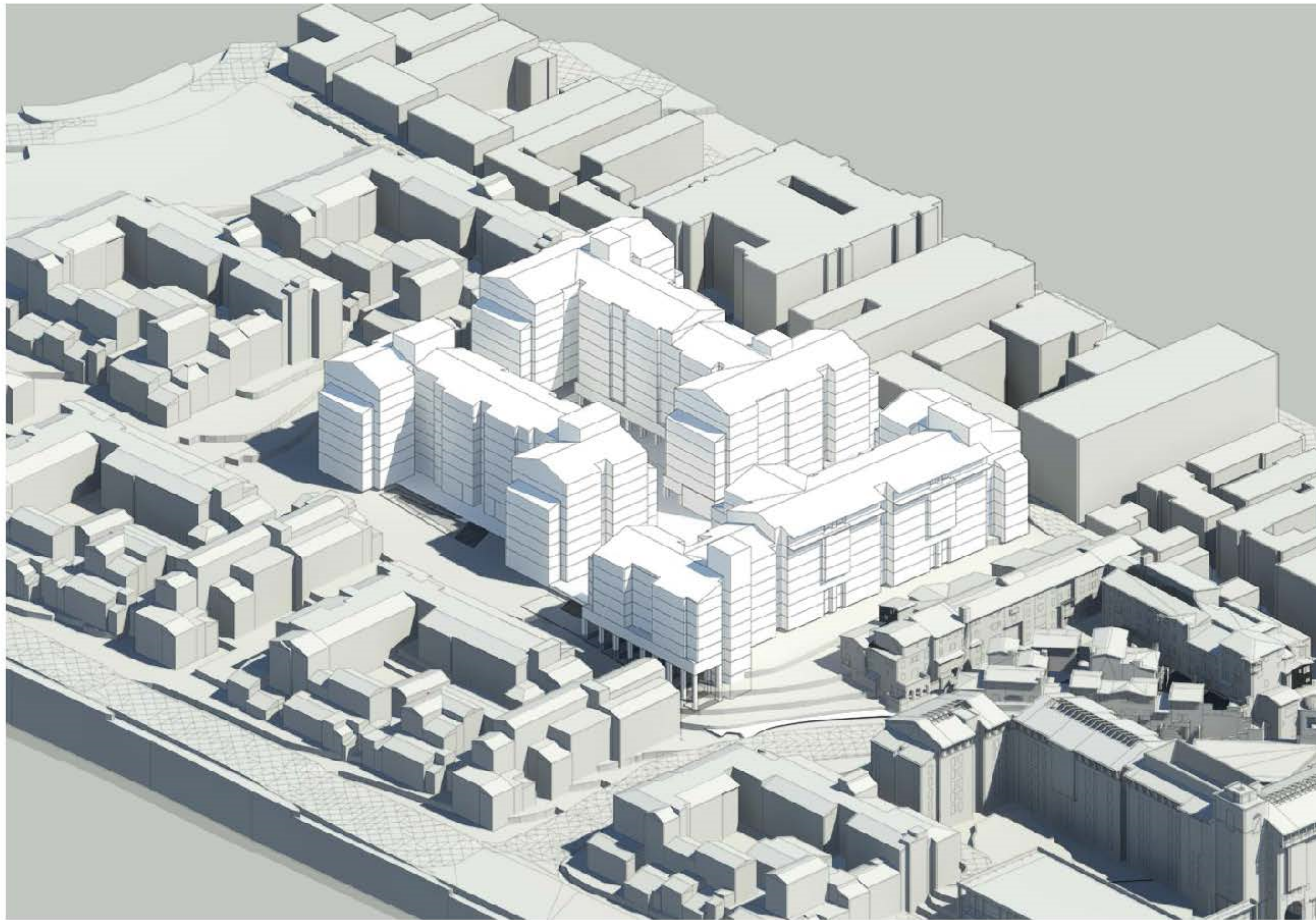
- 1 Lot 15 (~1,800)
- 2 Drake (~800)
- 3 Bradley (~600)

## Apartments:

- 4 UNEX (~1,350)
- 5 Warren (~2,350)



# Warren Hall – Conceptual Massing



D:\Projects\UCLA\U028.08\Graphics\EIR\ex\_AerialMassing\Perspective\_Warren.at

Source: Mithun 2017

Warren Hall Site – Aerial Massing Perspective

Figure 3-11

*UCLA LRDP Amendment (2017) and Student Housing Projects*



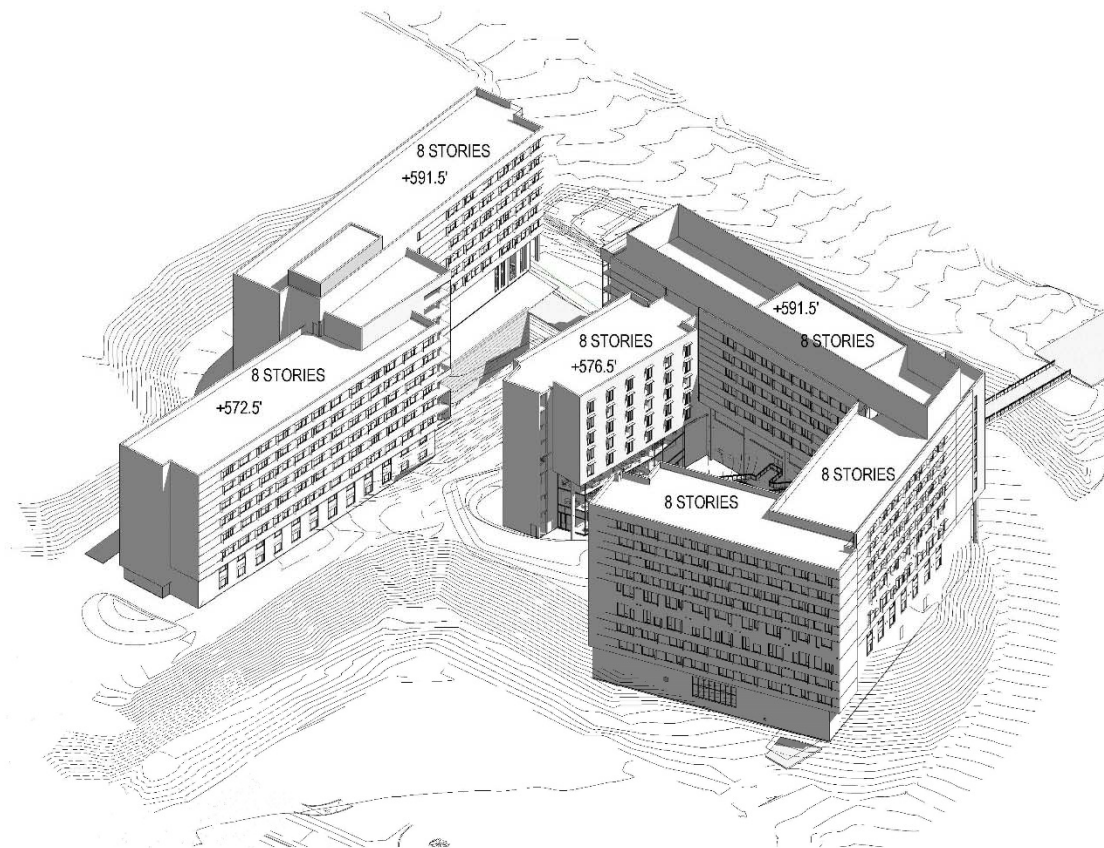
(06/15/2017 MMD) R:\Projects\UCLA\U028.08\Graphics\EIR\ex\_AerialMassing\Perspective\_Warren.pdf

# UNEX – Conceptual Massing



# Lot 15 – Conceptual Massing

PROGRAM	AREA (SF)	BED COUNT	ROOM COUNT	COVERED OUTDOOR AREA (SF)
<b>NORTH BUILDING RESIDENTIAL</b>	138,691	841	291	723
GSF PER BED	165			
GSF PER ROOM	477			
<b>SOUTH BUILDING RESIDENTIAL</b>	164,889	952	326	
GSF PER BED	173			
GSF PER ROOM	506			
<b>TOTAL RES GSF</b>	303,580	1,793	617	
TOTAL GSF PER BED	169			
TOTAL GSF PER ROOM	492			
<b>SOUTH BUILDING</b>				3,818
STUDY COMMONS CIRC & SUPPORT SPACE	2,679			
OPEN STUDY	7,619			
GROUP STUDY	1,904			
STACK STUDY	717			
MAKER SPACE	3,167			
MUSIC ROOMS	712			
VENDING	1,835			
FRONT DESK	0			
APARTMENTS	1,698			
HOUSING STORAGE	6,868			
<b>TOTAL NON-RES GSF</b>	27,199			
<b>TOTAL INTERIOR GSF</b>	330,779			4,541
<b>TOTAL CODE GSF</b>	333,050			2,271



**330,779 GSF** \*metrics per 9/4/17 presentation  
**1,793 BEDS**

## Other Major Initiatives

- Geffen Academy (Fall 2017 - 195 students in grades 6,7,9)
- Franz Hall Tower and CHS South Tower Seismic Renovations
- Anderson Graduate School of Management Expansion
- Master Plan for Lot 36, PS32
- Metro Purple Line Construction
- LA2028 Olympic and Paralympic Games

# *Questions*